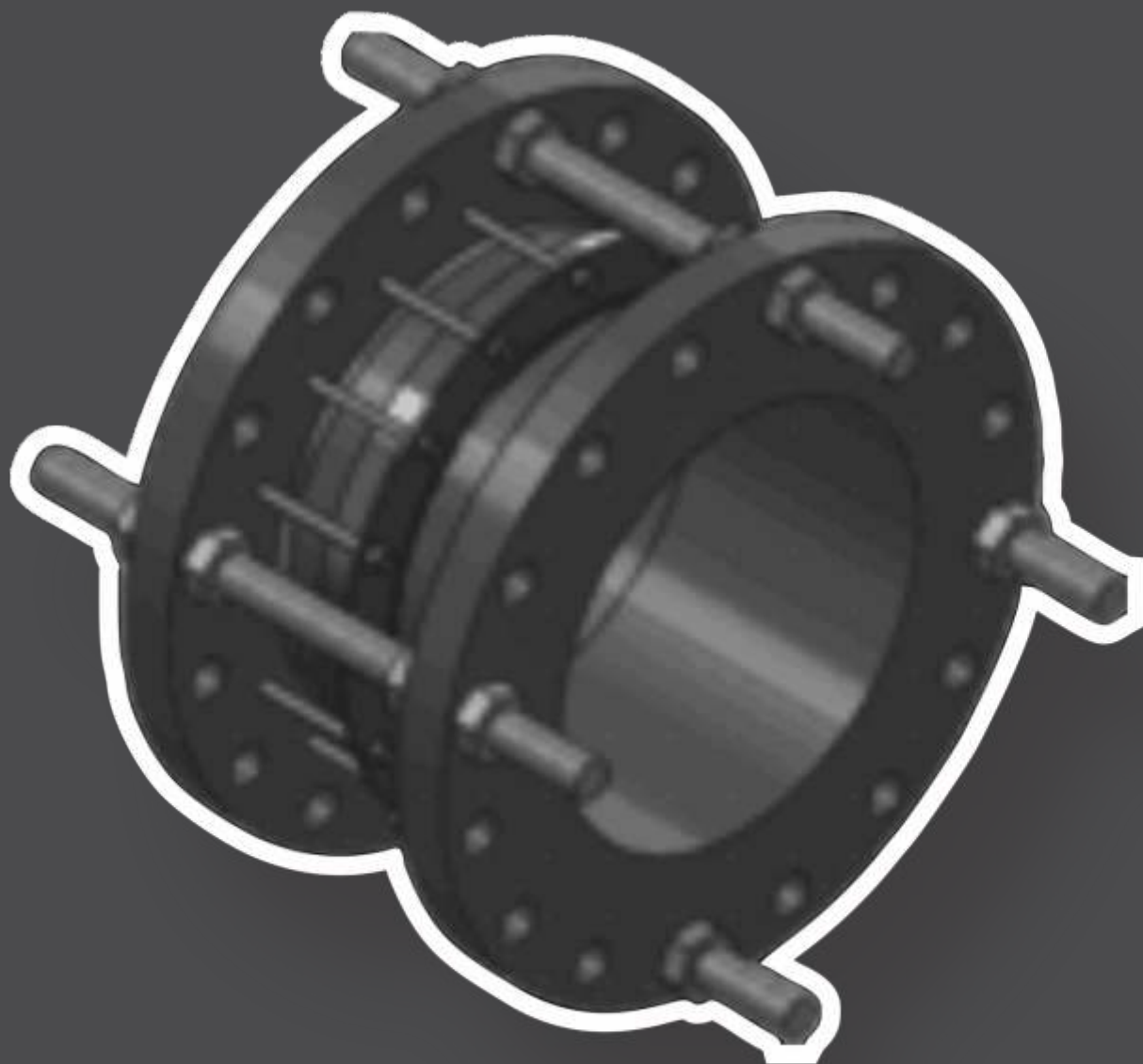


**WELBRO**  
PIPE & COUPLING



# **DISMANTLING JOINTS TECHNICAL DATA**

WELBRO offers both DISMANTLING JOINTS and RESTRAINED FLANGE ADAPTERS. Both are restrained products used exclusively in conjunction with flanged pipes of specified flange drillings.

Dismantling Joints and Restrained Flange Adapters are designed to easily remove flanged objects from pipe installations, including valves, pumps and flanged fittings. Tie rods are used to anchor the products, while also used to join the flanges, significantly reducing the number of bolts required.

Dismantling Joints accommodates a variable setting distance of 50mm. Any type of flange drilling can be accommodated and must be specified upon ordering.

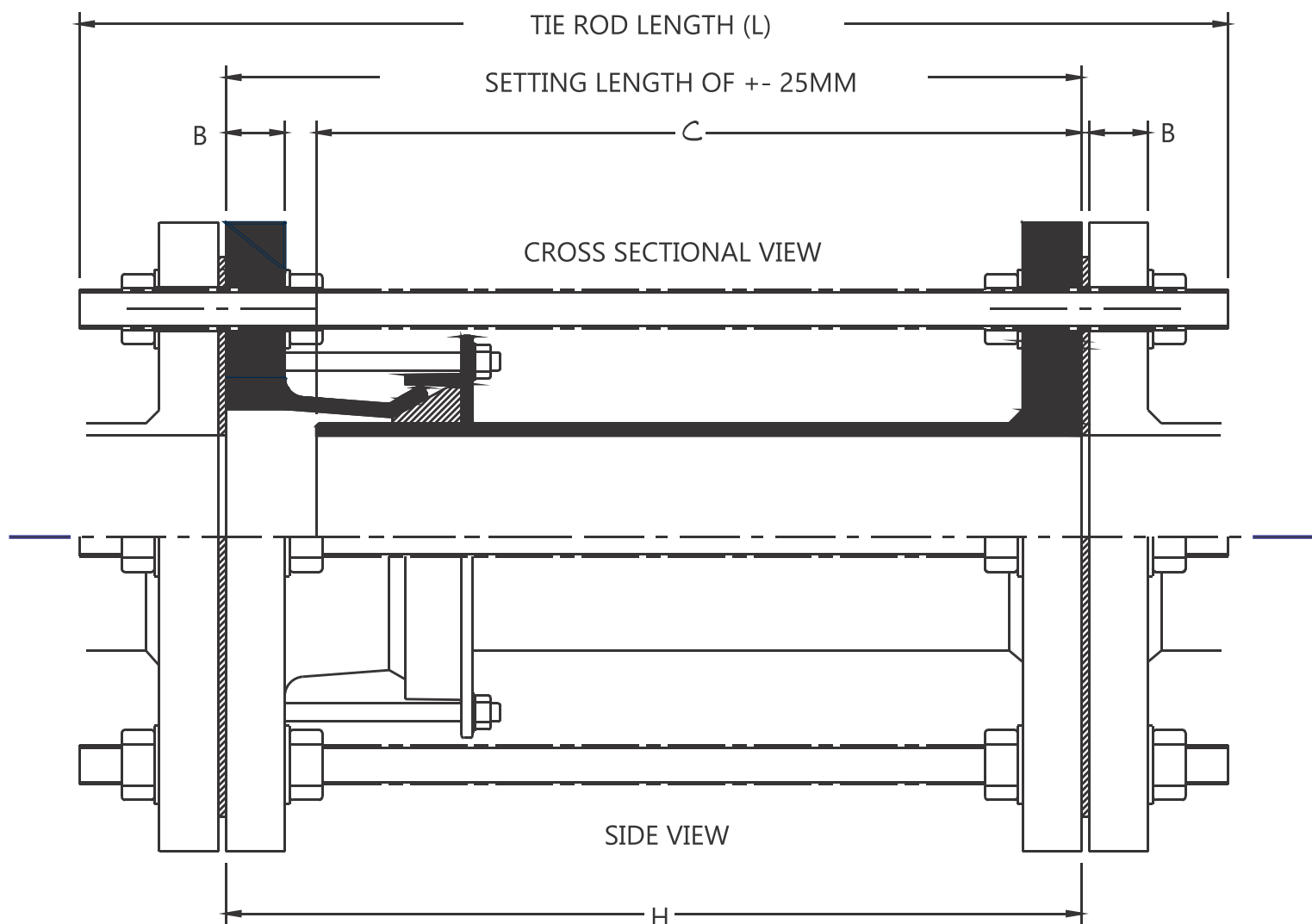
### **AVAILABLE RANGE**

WELBRO offer these products from 50mm to 1400mm

### **PRESSURE RATING**

The pressure rating is determined by the flange specified, for example a T1000 flange will accommodate 10 bar etc. .

## DISMANTLING JOINT GENERAL ARRANGEMENT DRAWING



## 1. End Rings:

- Mild Steel to BS EN 10025:2004 or Grade CQ

## 2. Adapter Body:

- Mild Steel to BS EN 10025:2004 or Grade CQ
- Flanges: SABS 1123

## 3. Spigot:

- Spigot - Steel to SANS 1431 Grade 300WA

## 4. Rubber Gasket:

- EPDM Grade E to BS 2494 1990 or SANS974 Related ISO4633

## 5. Studs / Tierods:

- Studs: Stainless Steel Grade 304
- Tierods: Steel to BS970 Grade 070 or Steel to SANS1143 Grade 8.8

## 6. Coating:

- Fusion Bonded Epoxy to SABS 1217 to a minimum thickness of 250 microns or client specifications
- Milds Steel Bolts are hot dip galvanised to SANS 763

## 6. SABS Standard:

- Manufactured according to SANS 1808-2: 2017

# DIMENSIONS

# WELBRO DISMANTLING JOINT

## DISMANTLING JOINT (DJ) - TABLE OF DIMENSIONS

DISMANTLING JOINTS				HDG FASTENERS							
NB	Coupling		Product Code	Flange			Spigot		Tie Rod Detail		
	ID	Range		Size	Thick	OD	Pipe NB	L (ff)	Nr	Diam	L
50	68	57 - 67	WBDJ0500x50T1000/1600	50	12	165	50	225	2	M16	310
			WBDJ05050x50T2500/4000	50	20	165			2	M16	330
65	81	59 - 79	WBDJ0650x65T1000/1600	65	12	185	65	225	2	M16	310
			WBDJ0650x65T2500/4000	65	22	185			2	M16	330
80	95	74 - 93	WBDJ0800x80T1000/1600	80	14	200	80	225	2	M16	310
			WBDJ080x80T2500/4000	80	22	200			2	M16	330
100	121	98 - 118	WBDJ1000x100T1000/1600	100	14	220	100	225	2	M16	310
			WBDJ1000x100T2500/4000	100	22	250			2	M20	330
125	156	132 - 154	WBDJ1250x125T1000/1600	125	16	250	125	225	2	M16	320
			WBDJ1250x125T2500/4000	125	28	270			2	M24	350
150	173.5	150 - 170	WBDJ1500x150T1000/1600	150	18	285	150	225	2	M20	330
			WBDJ1500x150T2500/4000	150	30	300			2	M24	360
200	225	205 - 223	WBDJ2000x200T1000	200	24	340	200	250	4	M20	360
			WBDJ2000x200T1600	200	26	340			4	M20	370
			WBDJ2000x200T2500	200	32	360			4	M24	390
			WBDJ2000x200T4000	200	36	375			4	M24	400
250	280	268 - 278	WBDJ2500x250T1000	250	20	395	250	250	4	M20	360
			WBDJ2500x250T1600	250	25	405			4	M24	380
			WBDJ50x0250T2500	250	30	425			4	M24	390
			WBDJ2500x250T4000	250	38	450			4	M30	420
300	330	315 - 328	WBDJ3000x300T1000	300	22	445	300	250	4	M20	370
			WBDJ3000x300T1600	300	28	460			4	M24	420
			WBDJ3000x300T2500	300	32	485			4	M24	430
			WBDJ3000x300T4000	300	40	515			4	M30	430

# DIMENSIONS

# WELBRO DISMANTLING JOINT

## DISMANTLING JOINT (DJ) - TABLE OF DIMENSIONS

DISMANTLING JOINTS				HDG FASTENERS							
NB	Coupling		Product Code	Flange			Spigot		Tie Rod Detail		
	ID	Range		Size	Thick	OD	Pipe NB	L (ff)	Nr	Diam	L
350	363	344 - 360	WBDJ3500x350T1000	350	25	505	350	275	4	M20	370
			WBDJ3500x350T1600	350	30	520			4	M24	430
			WBDJ3500x350T2500	350	35	555			4	M24	430
			WBDJ3500x350T4000	350	45	580			4	M30	460
400	413	391 - 410	WBDJ4000x400T1000	400	25	565	400	275	4	M24	410
			WBDJ4000x400T1600	400	35	580			4	M24	430
			WBDJ4000x400T2500	400	40	620			4	M30	450
			WBDJ4000x400T4000	400	50	660			4	M30	470
450	463	444 - 460	WBDJ4500x450T1000	450	30	615	450	295	4	M24	440
			WBDJ4500x450T1600	450	40	640			4	M24	460
			WBDJ4500x450T2500	450	45	670			4	M30	480
			WBDJ4500x450T4000	450	60	685			4	M30	510
500	513	494 - 510	WBDJ5000x500T1000	500	32	670	500	305	4	M24	450
			WBDJ5000x500T1600	500	40	715			4	M30	490
			WBDJ5000x500T2500	500	50	730			4	M30	510
			WBDJ5000x500T4000	500	70	755			4	M36	570
600	620	606 - 616	WBDJ6000x600T1000	600	38	780	600	370	4	M24	530
			WBDJ6000x600T1600	600	50	840			4	M30	570
			WBDJ6000x600T2500	600	60	845			4	M36	600
			WBDJ6000x600T4000	600	84	890			4	M45	670

While every effort has been made to ensure that the information in this document is correct and accurate at the time of publishing, WELBRO assumes no responsibility or liability for typographical errors or omissions or of for any misinterpretation of the information contained within the publication and reserves the right to change any information contained herein without notice.

Users of any WELBRO product or information within this document must make their own assessment of suitability for their particular application. Product dimensions are nominal only, and should be verified if critical to a particular installation. No warranty is either expressed, implied, or statutory made by WELBRO unless expressly stated in any sale and purchase agreement entered into between WELBRO and the user.



## **CONTACT DETAILS**

### **Sales and Distribution**

Office: + 27 10 065 1660

Email: [sales@welbropipe.co.za](mailto:sales@welbropipe.co.za)

### **Physical Address**

Corner of

Buite and Jacoba Street

Alberton North

### **Website**

[www.welbropipe.co.za](http://www.welbropipe.co.za)