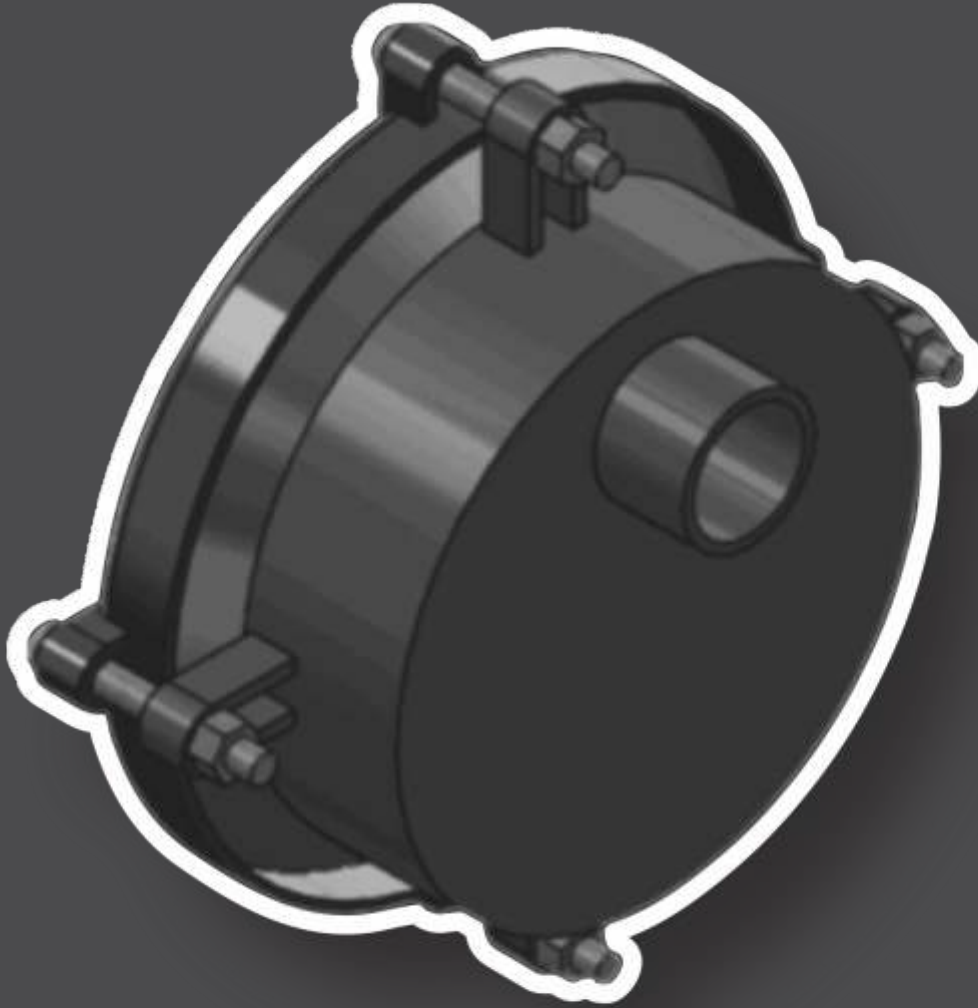


WELBRO
PIPE & COUPLING



**WIDE RANGE
END CAPS / TEST HEADERS
TECHNICAL DATA**

Application

WELBRO End caps or Test headers are designed to be used for blanking off a pipeline end, and pipeline pressure testing. These end caps can be used repeatedly, and can be removed and re-installed without any loss of performance. As with all WELBRO products, WELBRO End caps have a wide sealing range which means it can accommodate a wide variety of pipe OD's as well as pipe imperfections.

Configurations

WELBRO End caps can be supplied sockets if required for pressure testing, and customers can specify both the quantity and sizes of the sockets. If required, bolts and gaskets are available separately if required after several uses.

End caps with long barrels are available upon request.

Pressure Rating

WELBRO End caps up to 600mm are designed for a standard working pressure of 16 bar, and a test pressure of 24 bar. Larger pressure ratings can be accommodated upon request.

Temperature

WELBRO Couplings can be used in applications of between -40°C and 90°C, but are not recommended for use in heating systems

Location

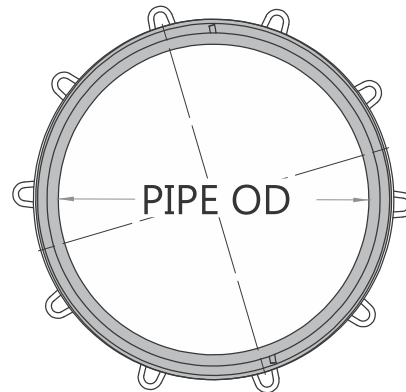
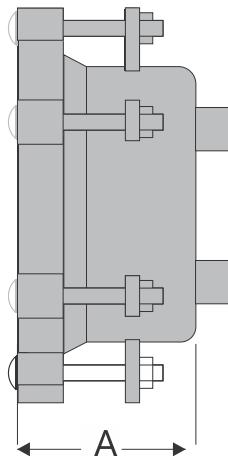
Above or below ground, subject to certain limitations according to product type and pipe material. Factories or any other pipe installation such as pump stations or treatment plants.

Range

WELBRO End Caps are available from 50mm to 600mm. Larger sizes can be accommodated upon request.

Installation

Because end caps are effectively blanked-off ends, they are subject to the immense pressures associated with a pipeline. If not secured properly, a badly or incorrectly installed end cap can cause severe injury and therefore, adequate external restraints are of critical importance.



END CAPS			HDG FASTENERS				
DN	ID	RANGE	Product Code	Product Height A	Fasteners		End Plate
					Nr	Size	T
50	68	57-67	WBEC0500	165	4	M12x115	8
65	81	59-79	WBEC0650	165	4	M12x115	8
80	95	74-93	WBEC0800	165	4	M12x115	8
80/2	106	88-104	WBEC0802	165	4	M12x115	8
100	121	98-118	WBEC1000	165	4	M12x115	8
100/2	131	108-128	WBEC1002	165	4	M12x115	8
125	156	132-154	WBEC1250	165	4	M12x115	10
150	173.5	150-170	WBEC1500	165	4	M12x115	10
175	210	192-209	WBEC1750	165	4	M12x115	10
200	225	205-223	WBEC2000	165	4	M12x115	10
200/2	245	218-243	WBEC2002	165	4	M12x115	10

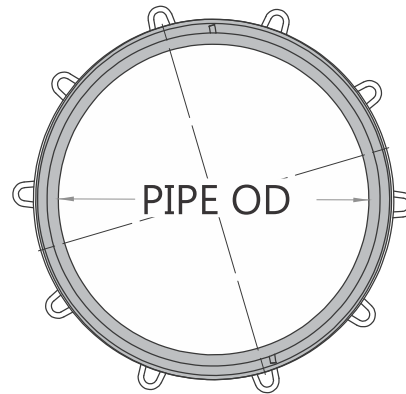
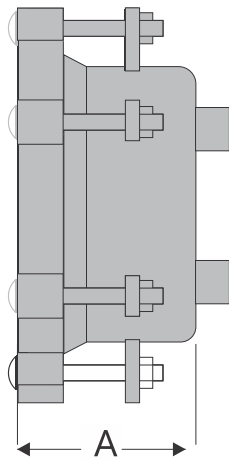
Sockets not supplied as standard - client needs to specify size and quantity

Standard working pressure PN16

Test pressure = 1.5 x WP = PN24

Higher pressures available on request

Long barrel end caps available on request



END CAPS			HDG FASTENERS				
DN	ID	RANGE	Product Code	Product Height A	Fasteners		End Plate
					Nr	Size	T
225	256	235-253	WBEC2250	165	4	M12x115	12
250	280	268-278	WBEC2500	165	4	M12x115	12
250/2	299	275-295	WBEC2502	165	4	M12x115	12
275	321	302-318	WBEC2750	165	6	M12x115	12
300	330	315-328	WBEC3000	165	6	M12x115	12
300/2	354	302-318	WBEC3002	225	6	M12x115	12
300/3	375	315-328	WBEC3003	225	6	M12x115	12
350	363	344 - 360	WBEC3500	225	6	M12x115	16
350/2	394	374-391	WBEC3502	225	8	M12x115	16
400	413	391-410	WBEC4000	225	8	M12x115	16
400/2	421	401-417	WBEC4002	225	8	M12x115	16
400/3	440	417-437	WBEC4004	225	10	M12x115	16
400/4	449	430-446	WBEC4000	225	10	M12x115	16

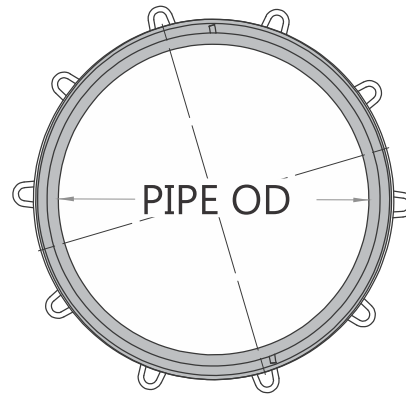
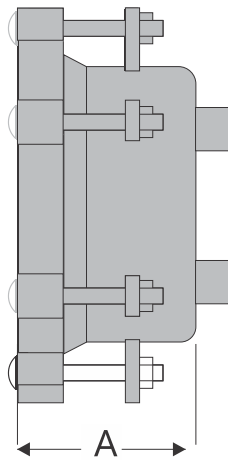
Sockets not supplied as standard - client needs to specify size and quantity

Standard working pressure PN16

Test pressure = 1.5 x WP = PN24

Higher pressures available on request

Long barrel end caps available on request



END CAPS			HDG FASTENERS				
DN	ID	RANGE	Product Code	Product Height A	Fasteners		End Plate
					Nr	Size	T
450	463	444-460	WBEC4500	225	10	M12x115	16
450/2	478	458-474	WBEC4502	225	10	M12x115	16
450/3	496	477-493	WBEC4503	225	10	M12x115	16
450/4	537	518-534	WBEC4504	225	12	M12x115	16
500	513	494-510	WBEC5000	225	12	M12x115	20
500/2	549	535-545	WBEC5002	225	12	M12x115	20
500/3	596	583-593	WBEC5003	225	12	M12x115	20
550	575	559-571	WBEC5500	225	14	M12x115	20
600	620	606-616	WBEC6000	225	14	M12x115	20
600/2	642	629-638	WBEC6002	225	14	M12x115	20

Sockets not supplied as standard - client needs to specify size and quantity
 Standard working pressure PN16
 Test pressure = 1.5 x WP = PN24
 Higher pressures available on request
 Long barrel end caps available on request

While every effort has been made to ensure that the information in this document is correct and accurate at the time of publishing, WELBRO assumes no responsibility or liability for typographical errors or omissions or of for any misinterpretation of the information contained within the publication and reserves the right to change any information contained herein without notice.

Users of any WELBRO product or information within this document must make their own assessment of suitability for their particular application. Product dimensions are nominal only, and should be verified if critical to a particular installation. No warranty is either expressed, implied, or statutory made by WELBRO unless expressly stated in any sale and purchase agreement entered into between WELBRO and the user.



CONTACT DETAILS

Sales and Distribution

Office: + 27 10 065 1660

Email: sales@welbropipe.co.za

Physical Address

Corner of

Buite and Jacoba Street

Alberton North

Website

www.welbropipe.co.za